

Gryffindor Tiled House Banner



Collection No. WB10008-901
1 Design/6 Files

MATERIALS



Isacord Thread Colors

0020 Black
0622 Star Gold
1904 Cardinal

Note: One spool of 1000 meter thread is adequate for the project unless otherwise noted.

MATERIALS



Stabilizers

- OESD Heavy Weight TearAway
- OESD Ultra Clean and Tear TearAway
- OESD Fusible Woven, Black
- OESD Fuse and Seal

Fabrics/Textiles

- Background: Black Quilter's Cotton
1 yard
- Backing:
1/2 yard
- **Note: Fabric yardage is based on a 11" x 15" hooping. Fabric and stabilizer amounts may vary depending on hoop size and number of tiles per hooping.**

Notion & Tools

- OESD Grippy Grid
- OESD Perfect Embroidery Press Cloth
- OESD Expert Point and Press Tool
- 505 Temporary Spray Adhesive
- Ruler, rotary cutter, mat
- Contrasting bobbin thread
(seam stitch only, may be different colors)
- Fabric marking pen
- Walking foot or Dual feed foot
- Embroidery Needle Sharp 75/11
- (3) 3" lengths of 5/8" ribbon

Isacord Thread Colors

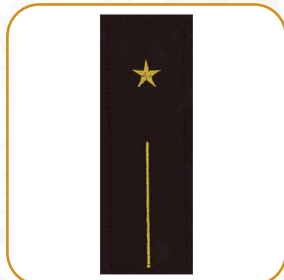
- Per the thread chart

SUMMARY



Completed Size: 13" H x 11 1/4" W

WB10008-01



Design Size:
4.03 X 1.25 in.
Requires 1 Design

WB10008-02



Design Size:
8.99 X 4.05 in.
Requires 1 Design

WB10008-03



Design Size:
4.03 X 1.25 in.
Requires 1 Design

WB10008-04



Design Size:
5.94 X 5.83 in.
Requires 1 Design

WB10008-05



Design Size:
5.92 X 5.82 in.
Requires 1 Design

WB10008-06



Design Size:
9.35 X 3.83 in.
Requires 1 Design

General Instructions

Embroider one of each design file WB10008-01 through WB10008-06.

Design WB10008-11 from Hufflepuff Tiled House Banner collection is shown in the instructions.

For each hooping, cut the following 11" x 15", or large enough to hoop:

- 1 layer of background fabric
- 1 layer of OESD Fusible Woven, black
- 1 layer of OESD Heavy Weight TearAway
- 1 layer of OESD Ultra Clean and Tear TearAway

Note: To economize on fabric, cut the fabric 15" wide (or the height of the hoop + 2") x the width of the fabric. Apply the stabilizers. Move the hoop down the length of the fabric as each tile is stitched. Leave a minimum of 1 1/2" between the tiles. This is called chain hooping.

☐ Step 1

- Apply OESD Fusible Woven to the back of the background fabric, per the product directions.
- Apply one layer of OESD Heavy Weight TearAway and one layer of OESD Ultra Clean and Tear to the wrong side of the background fabric with 505 Temporary Spray Adhesive.
- Using the OESD Grippy Grid, hoop fabric and stabilizer.



□ Step 2

- For each tile, stitch the colors per the thread chart.
- The last color in each tile is called "Seam". This line is the guide when trimming and stitching the tiles together and needs to be highly visible on the back side of the tile. Stitch the top color in a thread that blends with the fabric.
- For the bobbin, use a color that contrasts sharply with the back of the tile.
- **Note: Since the bobbin color doesn't have to be the same on each tile, this is a great time to use up partially wound bobbins.**



□ Step 3

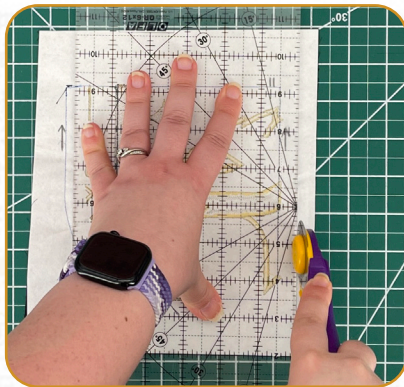
- After embroidery is complete, press each tile face down on an OESD Perfect Embroidery Press Cloth.
- Write the number of the tile on the back so it is easily identified during construction! Use a pen or pencil that will not bleed through to the front side.
- **Tip: Draw an arrow in the seam allowance pointing to the top of the tile to assist with construction.**



ASSEMBLY

Step 4

- At the cutting mat, place the tile right side down.
- Identify the "seam" stitch line. Trim 1/2" out from the seam stitch line, only on the straight edges that will be sewn together, to create the seam allowance.
- **Note: Accuracy here will significantly facilitate the construction of the scene.**



Step 5

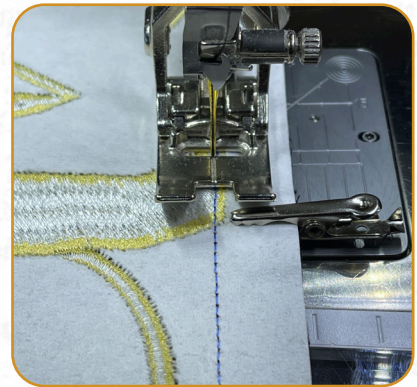
- Arrange the tiles in the layout for the scene.



ASSEMBLY

Step 6

- Stitch two adjacent tiles, right sides together; matching the left and right sides together. Align the matching edges and stitch just inside of the seam line.
- If the seams or major points of matching do not match up, try stitching that part first. Check for accuracy.
- Repeat until all the tiles have been paired.



Step 7

- Press each seam open.
- While warm, open the seam allowance with the large ball of the OESD Expert Point and Press Tool.
- Press again and allow to cool.
- Once cool, remove the excess stabilizer in the seam allowance.
- Do not remove excess stabilizer from inside the seam line.
- **Note: If the seams do not come apart easily, press both seam allowances to one side using steam and a cotton or linen setting.**



ASSEMBLY

Step 8

- Lay out the pressed tiles.
- Connect the third tile of the top row to the other two tiles.
- Stitch just inside the seam line, connecting all three tiles.
- Press seams open and remove stabilizer from the seam allowances.



Step 9

- Pair rows two and three, connecting upper row to the row below.
- Stitch just inside the seam line, connecting all three tiles.
- Press seams open and remove stabilizer from the seam allowances.



Step 10

- Pair rows two and three with row one, connecting upper row to the rows below.
- Align the center seams.
- Stitch just inside the seam line, connecting all four tiles.
- Press seams open and remove stabilizer from the seam allowances.



ASSEMBLY

Step 11

- After all the seams are sewn and pressed, use a ruler to mark a 1/2" seam allowance all the way around the outer seam line of the house banner.



Step 12

- Trim along the markings.



ASSEMBLY

Step 13

- Use the pieced front of the house banner as a pattern for the back.
- Place the back fabric right side up with the house banner right side down.
- Trace the outline of the house banner onto the back fabric.
- Cut out and set aside.



Step 14

- On the wrong side, sew around the perimeter of the house banner 1/8" to 1/4" away from the seam line. This will hold the seam allowances in place for the next steps.



ASSEMBLY

Step 15

- Along the top front of the house banner, mark 1 1/2" in from each side. Make a mark in the center.
- Fold the three 3" pieces of ribbon in half.
- Align the raw edges of the ribbons with the top edge of the house banner. For the two outside marks, the outer edge of the ribbon will be aligned with it. For the center mark, center the ribbon on it.
- Baste in place 1/4" away from the edge.
- **Note: The loops of the ribbons will point down, towards the tiling scene.**



ASSEMBLY

Step 16

- Place the front and back pieces right sides together.
- Sew around the outside of the house banner with a 1/2" seam allowance. Leave a 4-6" opening along the side edge for turning it right side out. Backstitch when starting and stopping.



Step 17

- Trim the corners and clip the curves.
- Turn the banner right side out through the opening.
- Use the Expert Point and Press Tool to smooth out the seams.



ASSEMBLY

Step 18

- Press the banner on a Perfect Embroidery Press Cloth.



Step 19

- Using a small strip of OESD Fuse and Seal, approximately 6" x 1/4", closing the opening following the product instructions.



ASSEMBLY

☐ Step 20

- Your banner is complete. Enjoy!

